

KME Germany GmbH & Co. KG

Architectural Solutions
 P.O. BOX 33 20
 49023 OSNABRÜCK
 Klosterstraße 29
 49074 OSNABRÜCK
 GERMANY
 Fon +49 (0)541 321-2000
 Fax +49 (0)541 321-2111
 www.kme.com
 info-tecu@kme.com

KME Italy S.p.A.

Architectural Solutions
 Via Morimondo, 26
 Ex Richard Ginori Ed.01 Int. A5
 20143 MILANO
 ITALY
 Fon +39 02 89140261
 Fax +39 02 89140281
 www.kme.com
 info-tecu-italy@kme.com

KME France S.A.S.

Architectural Solutions
 11 bis, rue de l'Hôtel de Ville
 92411 COURBEVOIE CEDEX
 FRANCE
 Fon +33 (0)1 47896-849
 Fax +33 (0)1 47896-932
 www.kme.com
 info-tecu-france@kme.com

KME Spain S.A.

Architectural Solutions
 Ctra. de Sabadell B -140, km5
 Sta. Perpètua de Mogoda
 08130 BARCELONA
 SPAIN
 Fon +34 93 5747090
 Fax +34 93 5747091
 www.kme.com
 info-iberica@kme.com

KME Yorkshire Limited

Architectural Solutions
 Severn House, Prescott Drive
 Warndon Business Park
 WORCESTER
 WR4 9NE
 UNITED KINGDOM
 Fon +44 (0)1905 751800
 Fax +44 (0)1905 751801
 www.kme.com
 info-uk@kme.com

Fricke GmbH

Eichendorffweg 10
 48268 GREVEN
 GERMANY
 Fon +49 (0)2575 309-0
 Fax +49 (0)2575 309-25
 www.kme.com
 info-fricke@kme.com

KME America Inc.

1000 Jorie Boulevard, Suite 111
 OAK BROOK, Illinois 60523
 USA
 Fon +1 (0)630 990-2025
 Fax +1 (0)630 990-0258
 www.kme.com
 info-america@kme.com

KME Metals (Shanghai) Trading Ltd.

Hong Qiao Road 808, Rm. 8612
 200030 Shanghai
 P.R.C.
 CHINA
 Fon +86 21 64478680
 Fax +86 21 64478679
 www.kme.com.cn
 info-china@kme.com

KME Benelux BVBA

Multiburo
 Culliganlaan 1B
 1831 DIEGEM
 BELGIUM
 Fon +32 (0) 2 403 11 73
 Fax +32 (0) 2 403 11 69
 www.kme.com
 info-benelux@kme.com

KME Danmark A/S

Næsbyvej 26
 5000 ODENSE C
 DANMARK
 Fon +45 65 916410
 Fax +45 65 916411
 www.kme.com
 info-dk@kme.com

Sweden:

KME Danmark A/S, Sweden
 Box 118
 64723 MARIEFRED
 SWEDEN
 Fon +46 15 910612
 Fax +46 15 910613
 www.kme.com
 info-s@kme.com

KME Polska Sp. z o.o.

ul. Wszystkich Swietych 11
 32-650 KETY
 POLAND
 Fon +48 (0)33 841 09 95
 Fax +48 (0)33 845 19 54
 www.kme.com
 info-polska@kme.com

KME (Suisse) SA

Binzallee 22
 8055 ZÜRICH
 SWITZERLAND
 Fon +41 (0)43 3882000
 Fax +41 (0)43 3882001
 www.kme.com
 info-ch@kme.com

Architectural Solutions

Austria
 Fon +43 (0) 699 13 62 91 79
 Fon +43 (0) 681 10 54 38 32
 info-austria@kme.com

Architectural Solutions

Netherlands
 Fon +31 (0) 6 53 74 38 92
 Fon +31 (0) 78 621 29 91
 info-nl@kme.com

Architectural Solutions

Russia
 Fon +7 92 52 90 52 18
 info-ru@kme.com

Architectural Solutions

India
 Fon +91 80 43 58 03 02
 info-india@kme.com

Architectural Solutions

Romania
 Fon +4 0314 148 449
 Fax +4 0314 148 449
 info-ro@kme.com

Architectural Solutions

Czech Republic
 Fon +420 602 38 99 27
 Fax +420 312 68 03 34
 info-tecu-cz@kme.com

Architectural Solutions

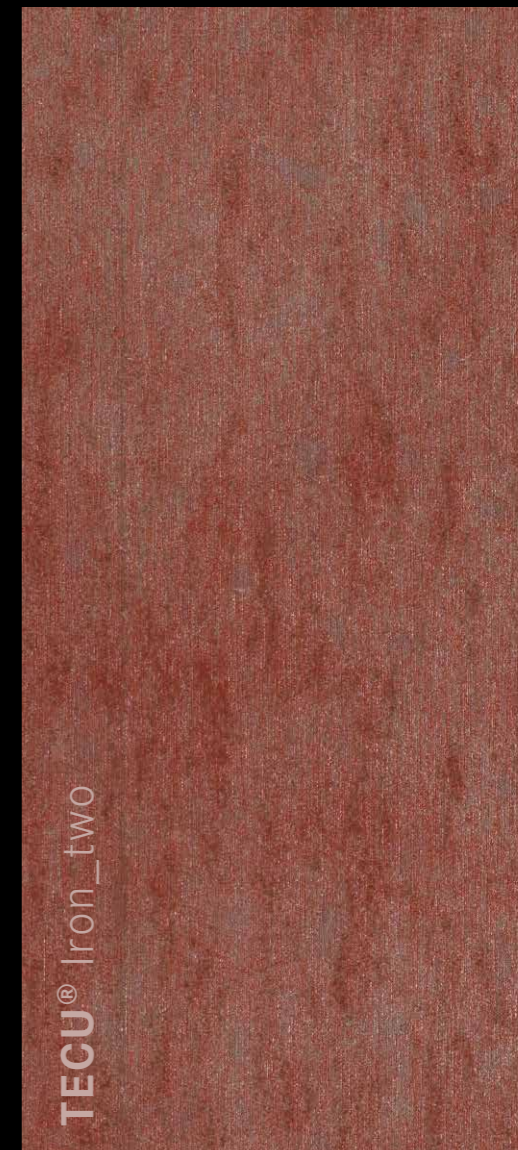
South East Asia
 Fon +65 63 37 86 71
 Fax +65 67 48 22 34
 info-sg@kme.com

**TECU® Iron**

Copper: sensationally different!



KME Germany GmbH & Co. KG
 TECU® Iron
 [GB]



® = registered trademark

All changes reserved.
 Owing to limitations in printing technology, the colours reproduced in this brochure should be regarded as approximate equivalents to the colours described.

TECU® Iron_one

TECU® Iron_two

TECU® Iron in the variants TECU® Iron_one and TECU® Iron_two enable you to create fascinating and lively perspectives with copper in facade cladding and in roof design.

TECU® Iron Copper: sensationally different!



TECU® Iron complements the TECU® product portfolio by adding an interesting and extraordinary option, which is already attracting a considerable degree of attention amongst architects and planners: an intensive reddish-brown copper surface finish, bringing weathered steel to mind, but also with all the positive features associated with copper, such as excellent formability, unrivalled durability and ease of processing.

TECU® Iron is offered in two versions: TECU® Iron_one and TECU® Iron_two, which differ in the vividness of the surface finish. TECU® Iron is offered as a sheet up to a size of 1,000 x 3,000 mm and also as the composite material TECU® Bond_iron.

TECU® Iron also repeatedly proves to be versatile and extremely lively, a feature typical for natural surface finishes; the nuances and shades of the surface blend gradually as time goes on. After installation on the object, the surface continues to develop. The individual development is extremely fascinating – just as modern architecture should be.

Light and shade, bright and dark, dry and wet all generate different optical nuances that make TECU® Iron a popular material for metal facades.

Another decisive advantage: TECU® Iron is made exclusively and to 100% from recycled copper! This significant added value of many TECU® products can be a decisive argument in favour of use in buildings with LEED, BREEAM or DGNB certificates, which are increasingly in demand, particularly for public buildings. TECU® Ecological Copper complies in all properties with materials made of new metals and surpasses all requirements of the European standard EN 1172.

TECU® stands for the combination of high quality and comprehensive service. As one of the worldwide leading producers of copper and copper alloy semis, KME with its application-related consultation services provides supports for planners, architects and installers, even beyond the European borders.

Product Range: TECU® Iron_one, TECU® Iron_two (all on request)

Sheets Formats/Thickness	0.6	0.7	1.0	1.2	1.5	2.0	4.0*
600 x 3000	O	X	O				
670 x 3000	X	X	O				
1000 x 2000	X	X	O	O	O	O	
1000 x 3000	X	X	O	O	O	X	O

X = on request > 160 sqm O = on request > 3,000 kg

* = as TECU® Bond