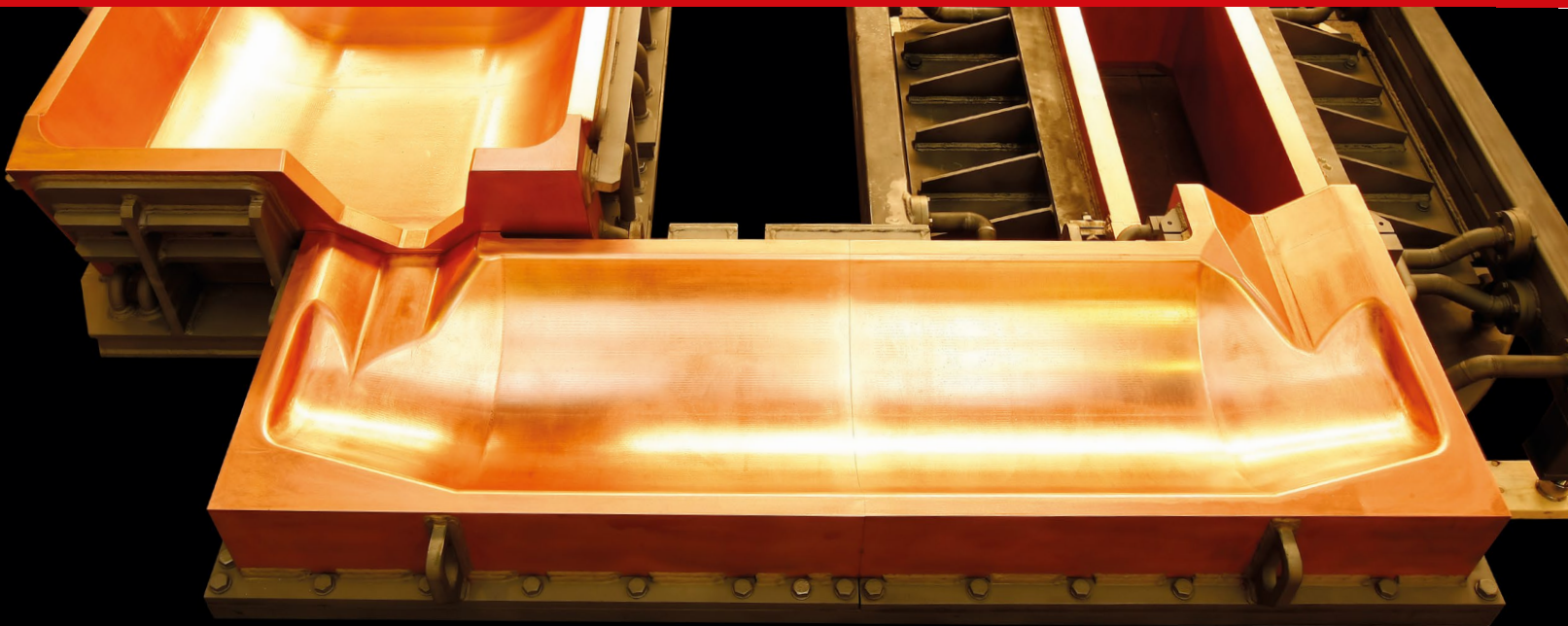


# COLD HEARTH MELTING

KME Germany GmbH & Co. KG  
SPECIAL DIVISION  
[EN]



# Engineered Products for Melting and Casting

## Cold Hearth Melting



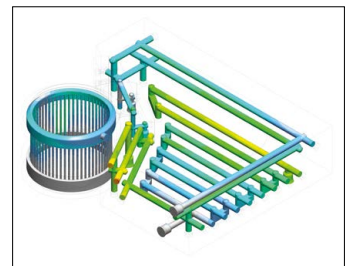
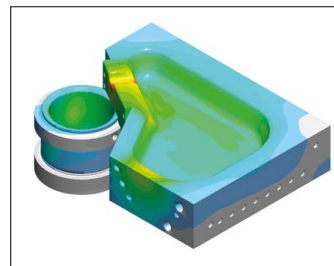
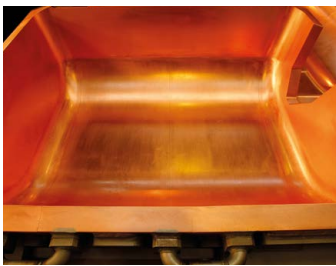
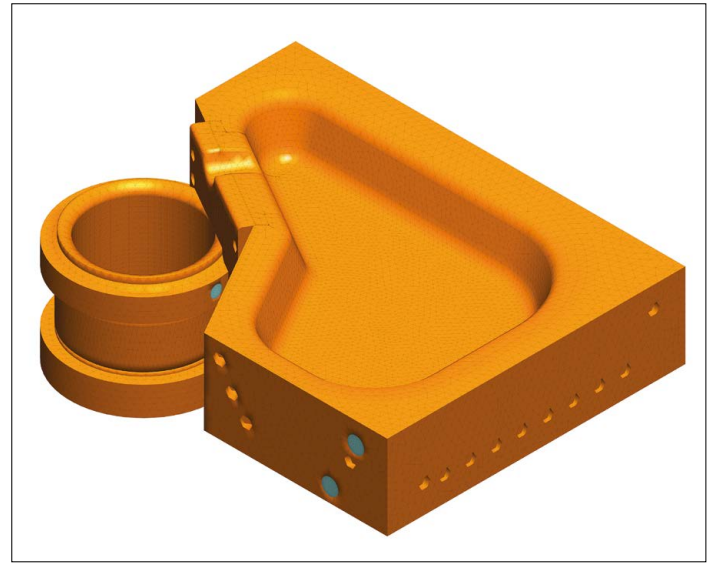
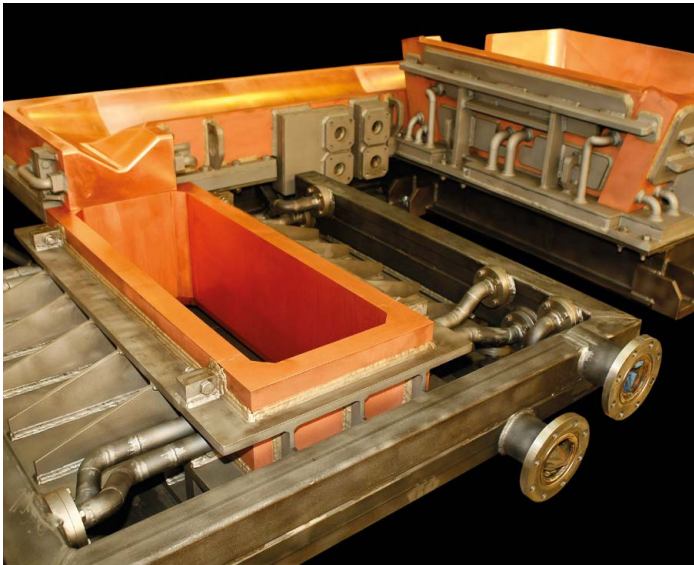
### Copper Hearths

**KME** can design and manufacture copper water-cooled hearths for use in the specialty melting industries. Our unique portfolio of copper alloys, together with extensive manufacturing know-how, makes **KME** an ideal partner for the supply of these critical products.

The scope of supply that **KME** can offer includes: mold engineering, mold material, mold coating and mold manufacturing - all contained under one roof at our German manufacturing plant.

When a new hearth is required, **KME** has the ability to supply either a direct replacement or a product optimized to improve its performance.

You can be sure that **KME** is the right partner for all your copper mold requirements today and in the future.



**KME America Inc.**

1000 Jorie Boulevard, Suite 111 . Oak Brook . Illinois 60523 . USA . Phone + 1 630 990-2025 . sales@kmeamerica.com . www.kme.com

**KME Germany GmbH & Co. KG** *Engineered Products Melting and Casting*

PO Box 33 20 . 49023 Osnabrück . GERMANY . Phone + 49 541 321-3211 . info-moulds@kme.com . www.kme.com