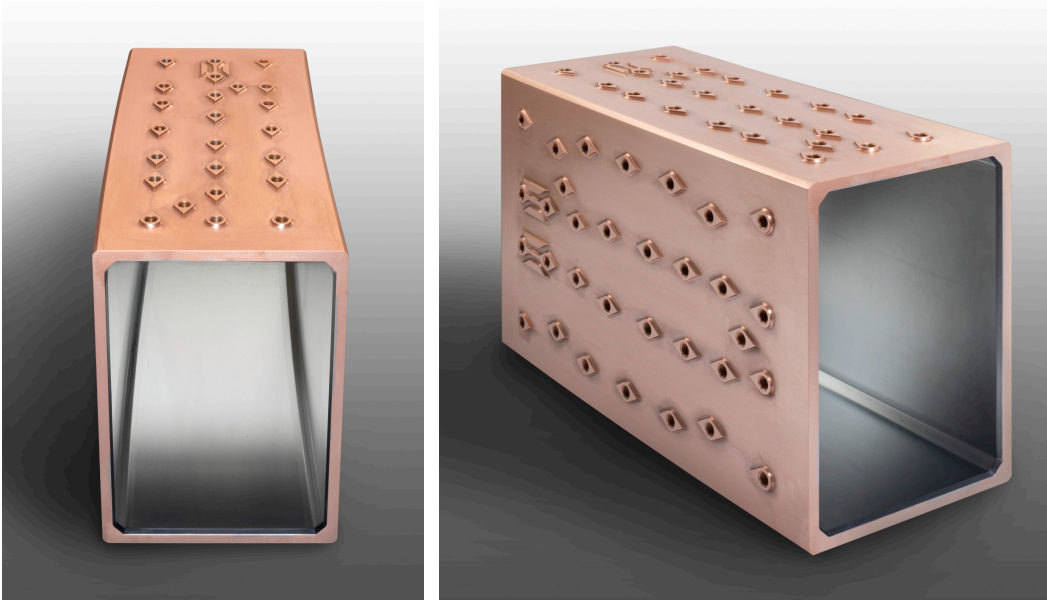


ATM – Advanced Tube Mould



- | | |
|--------------------|---|
| Challenge | <ul style="list-style-type: none"> • Eliminate corner gaps • Improve uniformity of mould cooling • Improve dimensional stability |
| Solution | <ul style="list-style-type: none"> • Replace traditional four-piece bloom mould plate with one-piece mould tube design • Thin-walled copper tube design • Uniform water gap cooling design • Low stress AFM® mounting technology (KME patent) |
| Application | <ul style="list-style-type: none"> • All bloom moulds |