

# OSNALINE® Specification for plastic tubes



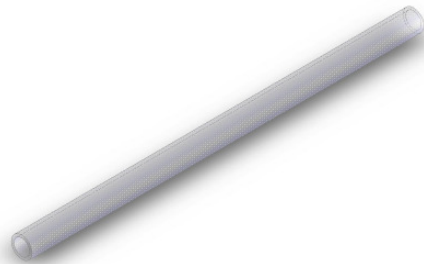
## 78P PTFE Rev. 0

### 1.0 Content

The specification describes the minimum requirements for tubes made of PTFE.

### 2.0 Design

Single pass tube, extruded of virginal PTFE (natural) material.



### 3.0 Standard

ASTM D3295-06

### 4.0 Delivering form

Tube ends are capped and sealed against dust and moisture.

Packing and delivering lengths see table:

- A - Reel Ø 500mm
- B - Box 480x480x200mm
- C - Box 440x440x115mm
- D - Drum Ø 1000mm

### 5.0 Quality inspection

- Dimensions
- Pressure test

### 6.0 Characteristics

- UV-stabilized
- Excellent chemical resistance
- Wide temperature range -190/+200 °C
- Conductive version available
- Flexible, easy to install

### 7.0 Application

- Sampling lines

### 8.0 Chemical resistance

Resistant against various chemicals (see public tables)

Dimension [mm]	Outer diameter [mm]	Inner diameter [mm]	Minimum bending radius [mm]	Working pressure [bar] with a safety factor of 3					Weight [Kg/100m]	Maximum length of delivery [m]	
				20 °C	50 °C	100 °C	150 °C	200 °C		Packing units	
6x1	6 +/-0,2	4 +/-0,15	30	15	13	10	8	6	3,4	350	B
8x1	8 +/-0,2	6 +/-0,15	40	11	9	7	6	4	4,7	270	B
10x1	10 +/-0,3	8 +/-0,15	50	9	7	6	5	3	6,1	220	A
12x1	12 +/-0,3	10 +/-0,15	60	7	6	5	4	3	7,5	190	A
16x1	16 +/-0,3	14 +/-0,15	80	5	5	4	3	2	10,1	250	A
Differing dimensions on request											